

# Walkersville Watershed Camping Area Detail

- (R) Restroom
- Shelter
- (W) Water
- Campsite
- Flagpole
- == Dirt Road
- - - Trail

**A** Activity Area

N



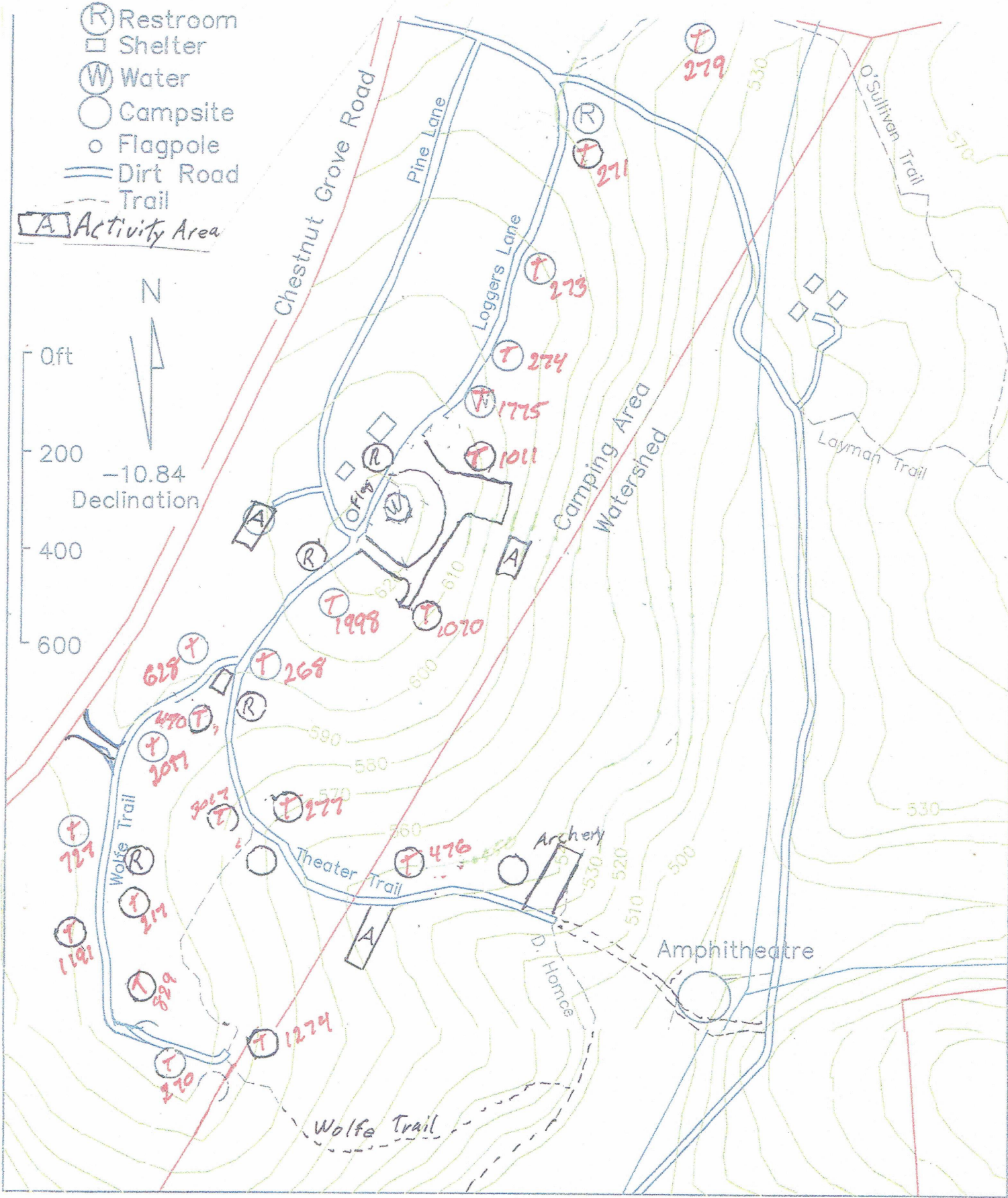
0ft

200

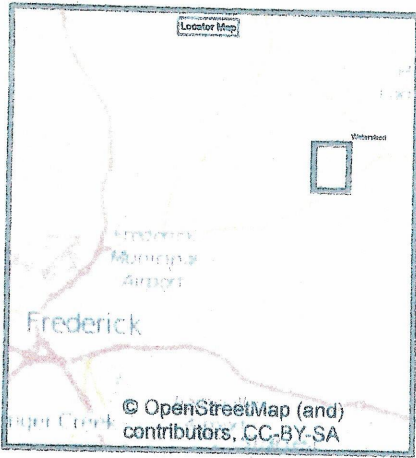
400

600

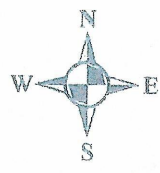
-10.84  
Declination



# Walkersville Watershed



- ### Legend
- Amphitheatre
  - Archery
  - Bridge
  - Campsite
  - Firepit
  - Flag Pole
  - Gate
  - Harpoon Station
  - Hatchet Yard
  - Information Board
  - Parking
  - Pavillion
  - Port-A-Potty
  - Shed
  - Smith House Ruins
  - Amphitheatre Trail
  - Buck Forest Trail
  - D. Homce Trail
  - Eagle Path
  - Gate 3 Turn Around
  - Grape Run
  - Hatcher Entrance
  - Layman Road
  - Logger Lane
  - O'Sullivan Trail
  - Old Woodsboro Pike
  - Pine Lane Road
  - Proposed Trail
  - Wolf Trail



Map compilation by  
Connor Tierney  
BSA Troop 274  
November 2015