

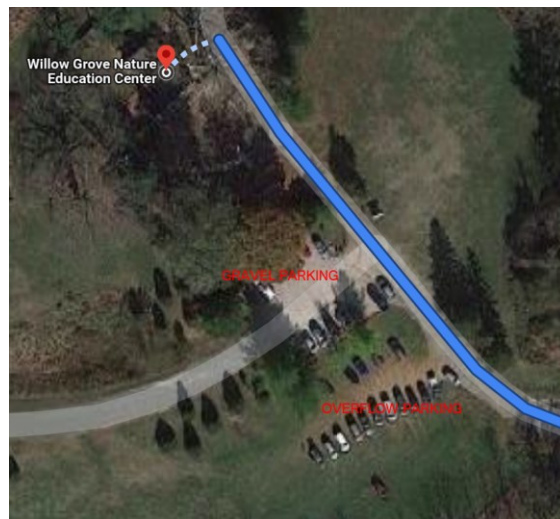
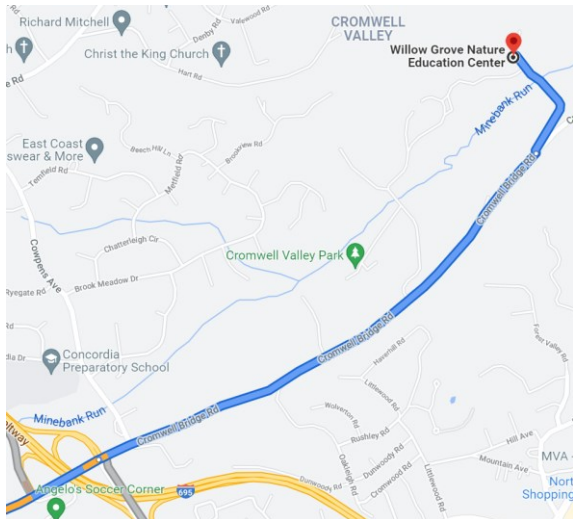
DIRECTIONS TO CROMWELL VALLEY PARK

GPS: 39.413945 -76.546648

2175 Cromwell Bridge Rd, Parkville, MD 21234

Enter Willow Grove Nature Education Center into Google Maps

1. Go East on I-695 past Dulaney Valley and Providence Road exits
2. Take Exit 29A, Cromwell Bridge Road, turn left at bottom of ramp
3. Stay on Cromwell Bridge Road for 1.3 miles from the traffic light at Loch Raven Blvd. You will pass Loch Raven High School and their speed camera, the first entrance, Sherwood Farm, to Cromwell Valley Park, and just past the brick substation is the Willow Grove Farm and Nature Center entrance on your left. Take it.
4. It is a narrow road down a hill to the parking areas. Share the road and wait if someone is coming up the road.
5. Cross the bridge and park in the overflow parking lot if open and staying the night or in the gravel parking if parking is available and you are just dropping off your son. Any vehicle staying after the park closes at sunset **MUST** be parked in the gravel lot or the overflow lot by the Willow Grove Nature. Park in any other location and you may be ticketed. **The Park staff will LOCK the gates at sunset and reopen them at sunrise.** The Troop 497 sign (see troop announcements for the trip) should be visible through your windshield.



Last Revised: 12 October 2021

This is the recommended route. It is the responsibility of all drivers to select a route and familiarize themselves with their route ahead of time.